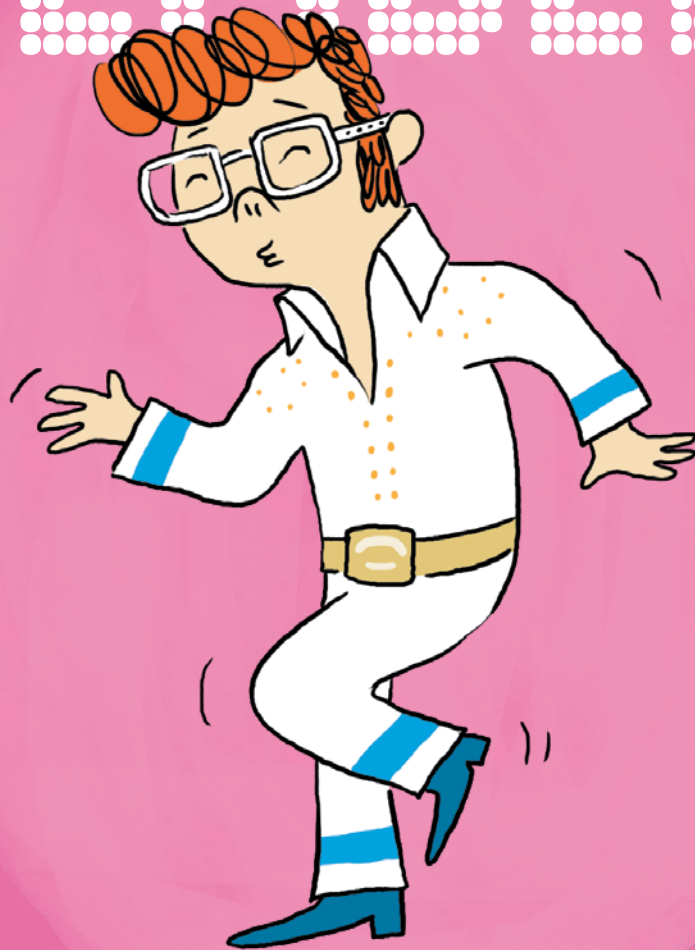


FRANÇOIS GRAVEL

JEAN-BAPTISTE DROUOT

ELVIS

TRAMPALAY



A handwritten musical score on a single staff. The music is in G major, indicated by two sharps (F# and C#) in the key signature. The time signature is common time (C). The melody consists of the following notes: G4 (quarter), A4 (quarter), B4 (quarter), A4-G4 (quarter), F#4 (quarter), E4 (quarter), D4 (quarter), C4 (quarter), B3 (quarter), A3 (quarter), G3 (quarter). A triplet of G3, A3, B3 is indicated by a bracket and the number '3' above the notes. The lyrics are written below the staff in all-caps, aligned with the notes: 'Wise MEN SAY ON-LY Fools RUSH IN, BUT I CAN'T HELP FAL-LING IN LOV'.

Wise MEN SAY ON-LY Fools RUSH IN, BUT I CAN'T HELP FAL-LING IN LOV

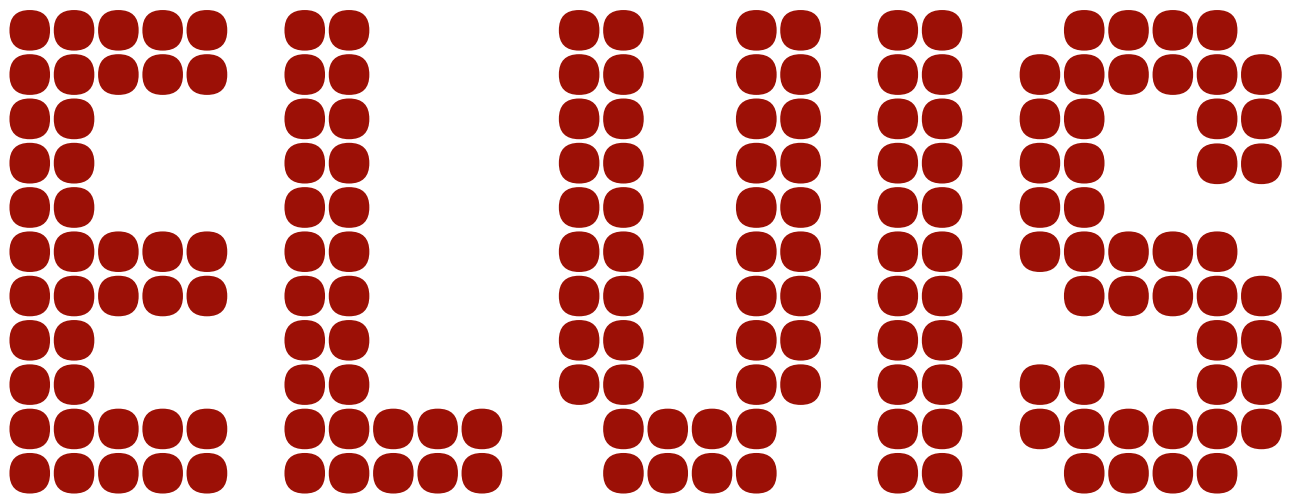


E WITH YOU SHALL I STAY? WOULD IT BE A SIN — IF I CAN'T HELP FAL-L

The image shows a single line of handwritten musical notation on a five-line staff. The notes are written in black ink. Below the staff, the lyrics are written in a simple, hand-drawn font. The lyrics are: "E WITH YOU SHALL I STAY? WOULD IT BE A SIN — IF I CAN'T HELP FAL-L". The word "FAL-L" is followed by a double bar line and a fermata symbol, indicating a long note. The word "SIN" is followed by a long horizontal line, also indicating a long note. The word "FAL-L" is followed by a double bar line and a fermata symbol, indicating a long note. The word "FAL-L" is followed by a double bar line and a fermata symbol, indicating a long note.

FRANÇOIS GRAVEL

JEAN-BAPTISTE DROUOT

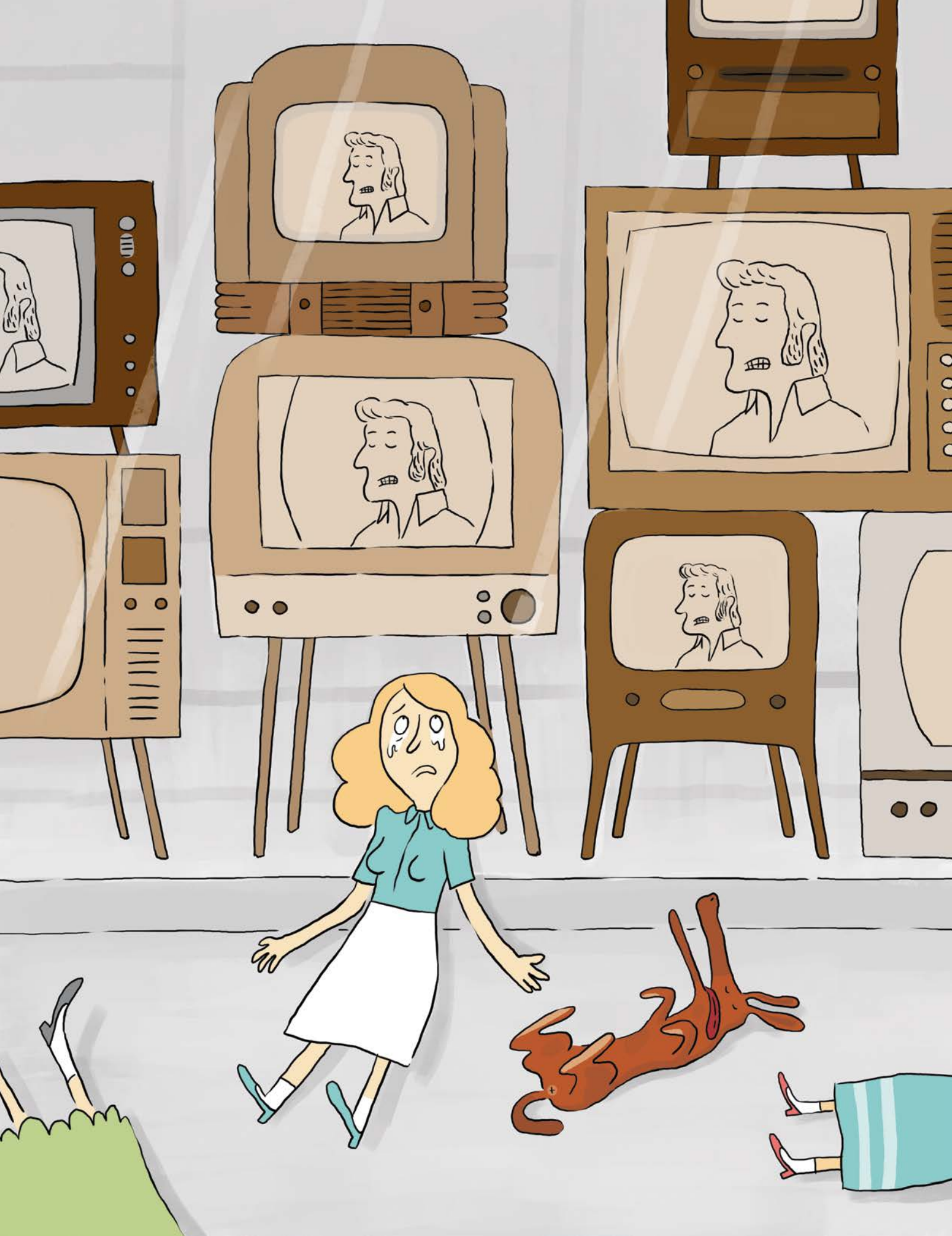




IL ÉTAIT UNE FOIS un chanteur qui s'appelait **Elvis Presley**.

Toutes les jeunes filles du monde entier étaient folles de lui.

Elles l'aimaient tellement qu'elles embrassaient le sol sur lequel
il avait marché!



Certaines tombaient même sans connaissance
quand elles le voyaient à la télévision !

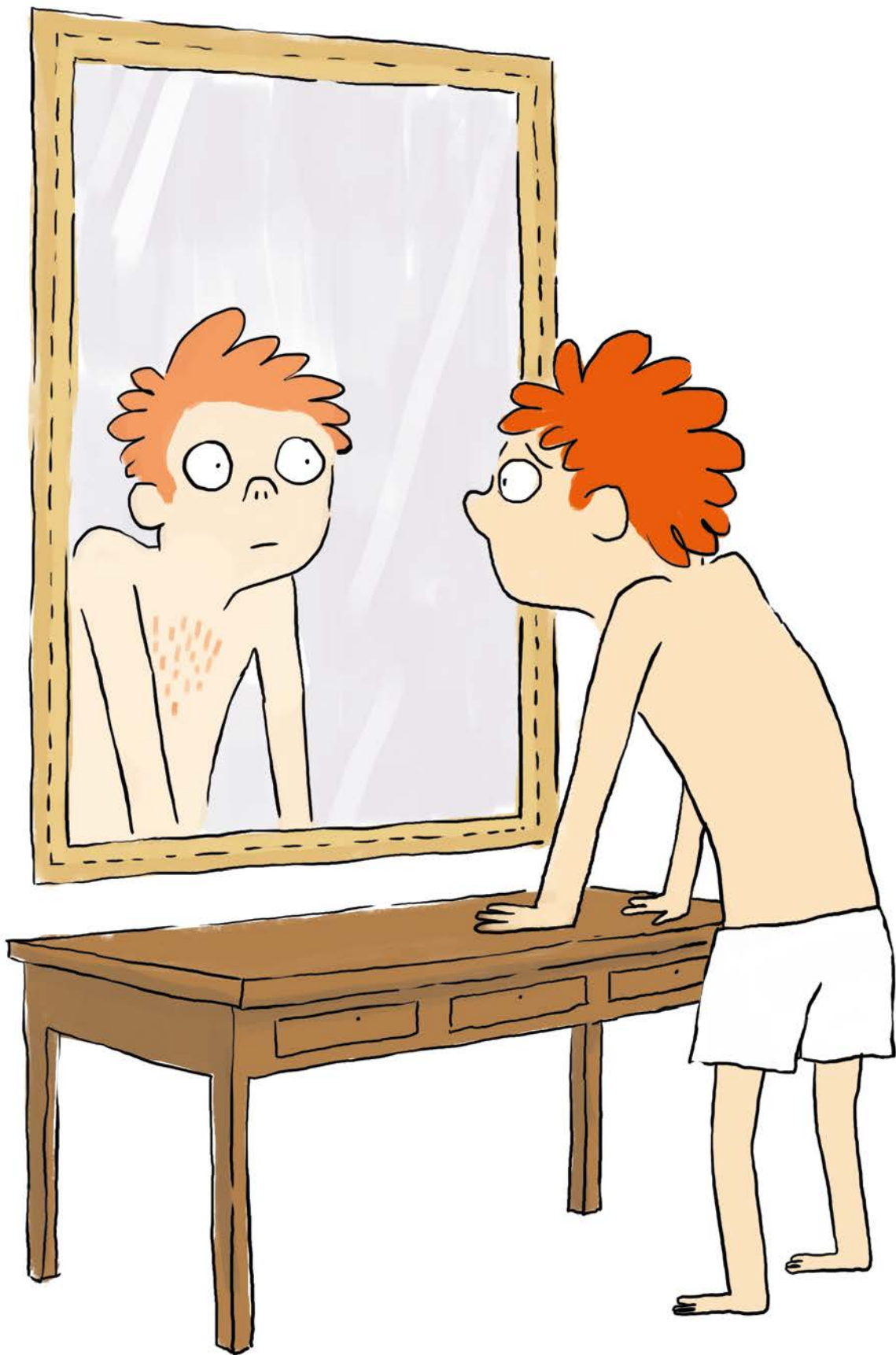




Un de mes oncles s'appelait **Elphège Tremblay**.

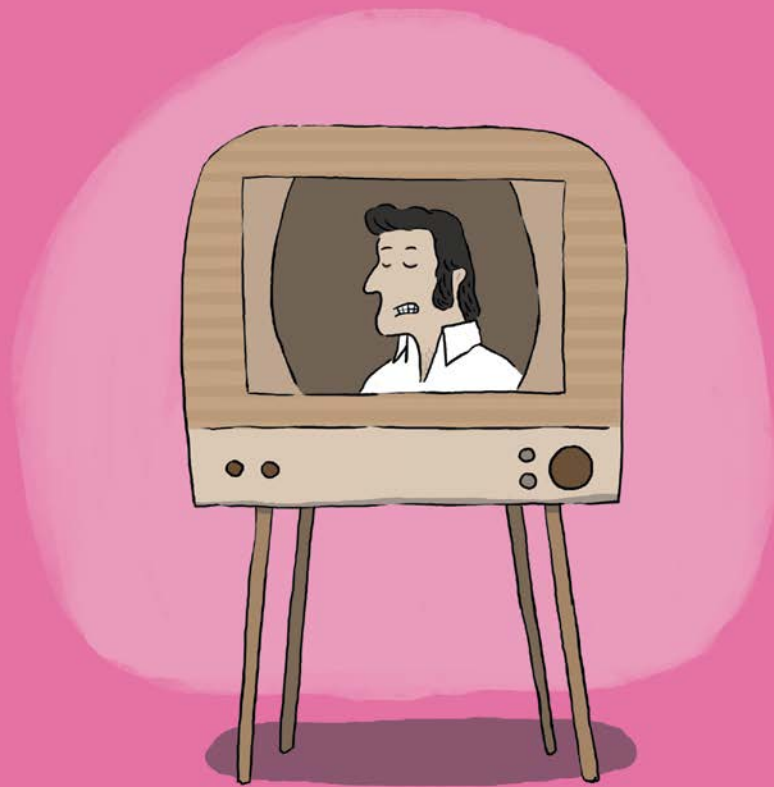


Il aurait bien aimé que toutes les filles soient folles de lui, mais elles n'en avaient que pour **Elvis**.



ELPHÈGE TREMBLAY aurait bien aimé
que toutes les filles soient folles de lui.

Mais elles n'en avaient que pour ELVIS.



ISBN 978-2-89540-792-8



9 782895 407928

editions400coups.com

g^{de}niMAce